

S-VENT[®]

SUBMITTAL SHEET



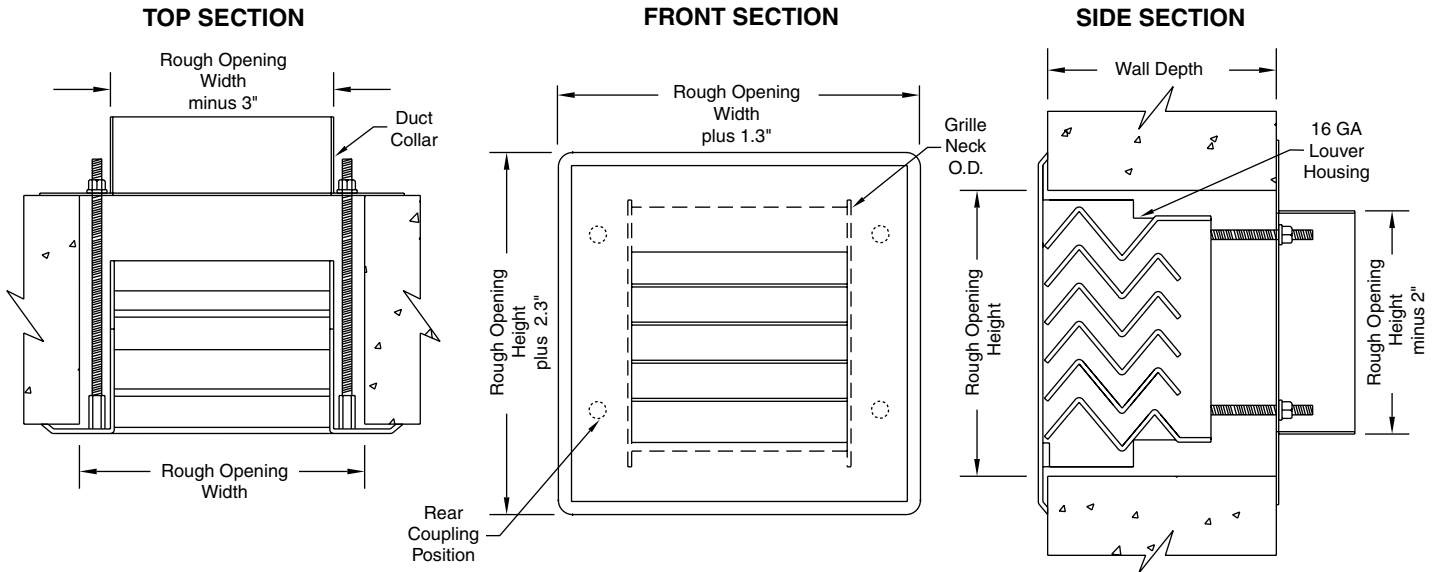
Anemostat[®]

A MESTEK COMPANY

P.O. BOX 4938 • 1220 WATSONCENTER ROAD • CARSON, CA 90745-4206
 (310) 835-7500 • FAX (310) 835-0448
 e-mail: airsec@anemostat.com • website: www.anemostat.com

SSV49-__-RM

SPECIFY TYPE
MAXIMUM SECURITY GRILLE
 3/8" HORIZONTAL OPENING
 REAR MOUNTED



IMPORTANT: It is the specifier's responsibility to properly configure the HVAC system to meet the appropriate level of comfort, safety, security and detention

PRODUCT FEATURES

Face Flange

16 GA (standard)

Material Type

Stainless Steel (standard)

Horizontal Louvers with Housing

16 GA with 3-1/4" Neck Depth (std)

Duct Collar

14 GA Galvanized (standard)

Coupling Nuts with Threaded Rods

(standard)

Finish

2B Mill Finish (std)

Beige Powder Coat-5 to 7 mil (opt)

White Powder Coat-5 to 7 mil (opt)

Other Powder Coat Colors _____

Sleeve (optional)

14 GA Galvanized - specify length _____

Locking Angles (two pieces)

1" x 1" x 3/16" (optional)

1" x 1" x 1/4" (optional)

1" x 1" x 1/8" (optional)

Opposed Blade Damper (optional)

(galvanized, shipped loose)

Rear Operated

MUST SPECIFY TYPE (BASED ON ROUGH OPENING SIZE) AS PART OF MODEL NUMBER WHEN PLACING ORDER

ROUGH OPENING SIZES (WIDTH X HEIGHT)

Dimensions in Inches		WIDTH								
		7	9	11	13	15	17	19	21	23
HEIGHT	6	A1	B1	C1	D1	E1	F1	G1	H1	J1
	8	A2	B2	C2	D2	E2	F2	G2	H2	J2
	10	A3	B3	C3	D3	E3	F3	G3	H3	J3
	12	A4	B4	C4	D4	E4	F4	G4	H4	J4
	14	A5	B5	C5	D5	E5	F5	G5	H5	J5
	16	A6	B6	C6	D6	E6	F6	G6	H6	J6
	18	A7	B7	C7	D7	E7	F7	G7	H7	J7
	20	A8	B8	C8	D8	E8	F8	G8	H8	J8
	22	A9	B9	C9	D9	E9	F9	G9	H9	J9

QTY	TYPE	ROUGH OPENING W"	X	H"	WALL DEPTH
27	C4	11	P	12	E 6"

SUBMITTAL APPROVAL

Job Name and Location			
Engineer	Date	Factory	Date
Mfr. Rep.	Date	Submitted By	Date

NOVEMBER 2008
 NEW CONSTRUCTION
 STAINLESS STEEL

S-VENT SECURITY PRODUCTS PAGE 13