



TECHNICAL DATA  
FROM  
**Anemostat**<sup>®</sup>  
DOOR PRODUCTS  
A MESTEK COMPANY

P.O. BOX 4938 • 1220 WATSONCENTER ROAD  
CARSON, CA 90745-4206  
(310) 835-7500 • FAX (310) 835-0448

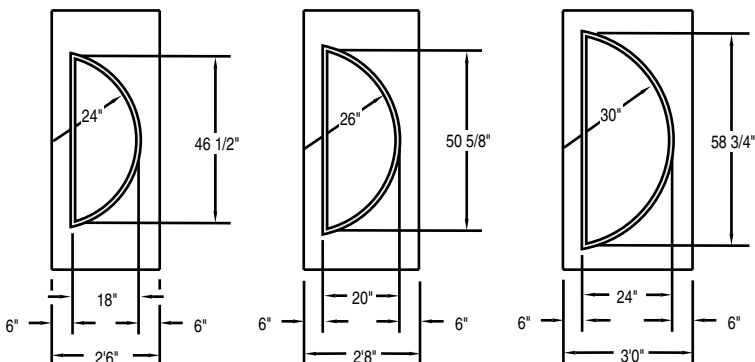
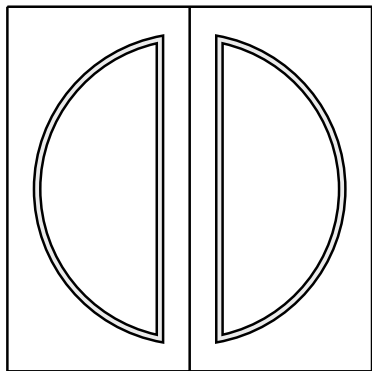
e-mail: sales@anemostat.com • website: www.anemostat.com

**FGS-75-RD**  
HALF CIRCLE  
METAL VISION FRAME

**UL** US  
FIRE RATINGS  
UNDERWRITERS' LABORATORIES

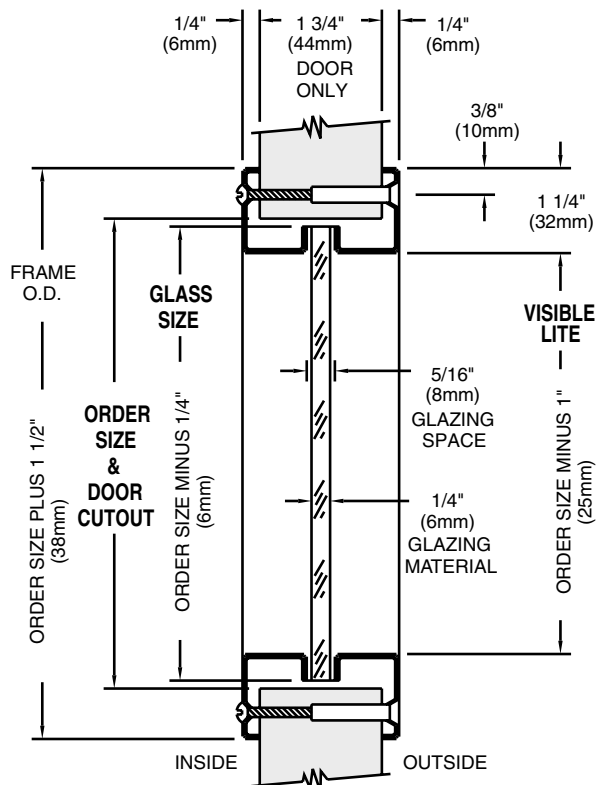
**WARNOCK HERSEY**

**DETAIL DRAWING**



NOTE: Dimensions are to cutout, not external dimensions.

Anemostat manufacturing dimensions ±1/32  
Actual dimensions are nominal and may vary  
based on component manufacturers tolerances.



**Recommendation: Do Not make Cutouts in Doors prior to receiving Custom Shaped Vision Frame**

**STANDARD PRODUCT FEATURES**

- **MATERIAL:** 18 GA. Cold Rolled Steel.
- **FINISH:** Grey Primer, Beige or Bronze Baked Enamel.
- **INSTALLATION:** By drilling 1/4" holes thru the door, around the perimeter of the door cutout.  
Frame has countersunk mounting holes for #8x32 phillips head steel thru bolts with a blank head on one side for flush appearance.
- **DOOR THICKNESS:** For 1 3/4" Wood or Metal Doors.
- **GLAZING:** Should be 1/4" or 3/16" fire and/or safety rated with U.L. and/or W.H.I. classification markings. Glazing space of 5/16" allows for glazing tape to be used on both sides of the glass.
- **AESTHETICS:** Smooth half circle contour of frame style gives a unique design to any setting.
- **STANDARD SIZES:** See drawings (Sold in separate units, i.e. LH or RH side).
- **IMPORTANT:** Interpretation of building and fire codes may vary. Consult with the local authority having jurisdiction in your area, to determine appropriate standards.
- **NOTE:** For Exterior use, High Humidity or Salt Air application, product must be Galvanized or Stainless Steel.

**OPTIONAL FEATURES**

- **MATERIAL:** #304 or #316 Stainless Steel, #4 Finish(Satin), Galvanized (Hot Dipped, or Electro Plated).
- **FINISH:** Custom Baked Enamel Colors (as per sample chip supplied). Plated Finishes to match the lock, hinges and closer.
- **FASTENERS:** Special Security Screw Fasteners, See Page 31, this section.
- **SPECIALS:** Lead Lined for X-ray applications.

**FIRE RATINGS (w/ U.L. & W.H.I. classification markings) Positive Pressure**

- **20 MINUTE:**\* Approved listing at 3204 sq.in. visible lite (max. width 36", max. height 89").
  - **45/60 MINUTE:**\* Approved listing at 2772 sq.in. visible lite (max. width 36", max. height 77").
  - **90 MINUTE:**\* Approved listing at 1296 sq.in. visible lite (max. width 36", max. height 54").
  - **3 Hour:**\* Approved listing at 100 sq.in. visible lite (max. width 12", max. height 33")
- \* Must be used with FIRELITE NT and Fire listed glazing tape and be used in appropriately tested door assembly.
- **PLEASE NOTE:** On visible lite sizes larger than 1296 sq. in. on 20/45 min. and 100 sq. in. on 60/90/180 min., please consult with your Door / Frame Manufacturer's procedures, for their maximum glass size tested.

Job Name & Location	Submitted by

(3/08)  
414A102A